



DELAWARE ART MUSEUM

MEMBERS NEWSLETTER

May/June 2010



See It

Dinotopia: The Fantastical Art of James Gurney

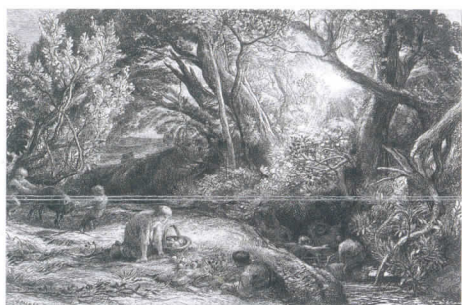
Last chance! Through May 16, 2010

Be sure to explore the remarkable land of Dinotopia, where humans and dinosaurs live in harmony, one last time! Also, come meet author and illustrator James Gurney when he returns to the Delaware Art Museum on May 15 for a lecture and book-signing.

Dinotopia: The Fantastical Art of James Gurney was organized by the Norman Rockwell Museum, Stockbridge, MA. This exhibition is presented in Delaware by DuPont. This exhibition is made possible, in part, by grants from the Delaware Division of the Arts, a state agency dedicated to nurturing and supporting the arts in Delaware, in partnership with the National Endowment for the Arts.

The Pastoral Vision—British Prints, 1800 – Present

May 15, 2010 – August 15, 2010



This exhibition explores British printmaking from the 19th century to the present, focusing on landscapes by artists such as William Blake, James McNeill Whistler, Aubrey Beardsley, and Rachel Whiteread. Drawn entirely from the Museum's permanent collection, with many pieces rarely on view, the display will investigate the changing sensibilities in regard to the landscape and fluctuating trends in printmaking over three centuries.

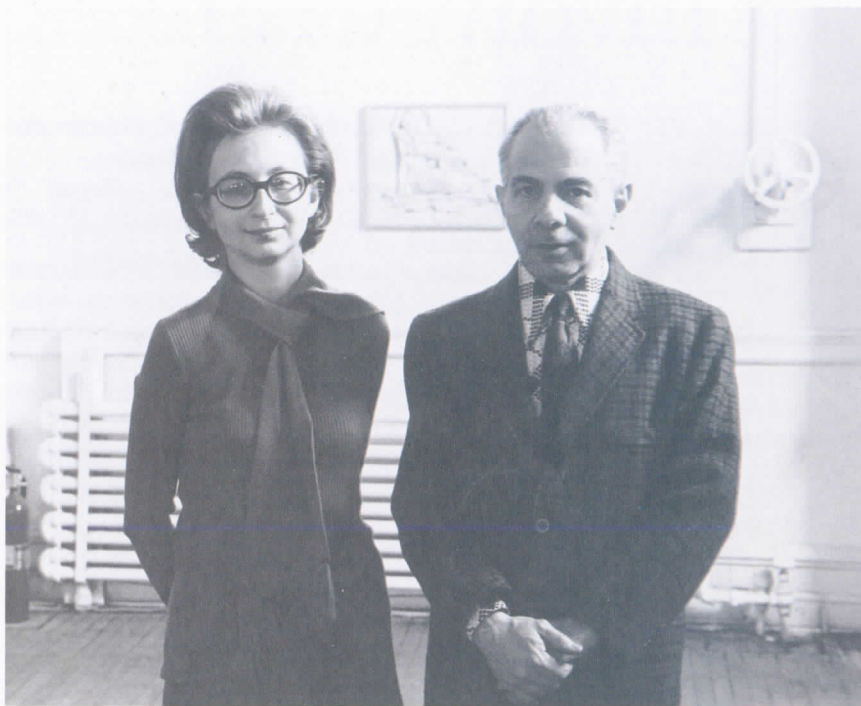
Haiti: A Tribute in Art

May 8, 2010 – July 11, 2010

While Haiti's troubles continue to dominate the news, this exhibition strives to draw attention instead to the island nation's rich artistic diversity. Inspired by and organized in collaboration with the Wilmington, Delaware, Chapter of The Links, Incorporated, the show will include examples of sequined and beaded voodoo flags, ironwork, and paintings.



This exhibition is supported, in part, by a grant from the Institute of Museum and Library Services (IMLS).



Fifty Works for the First State: The Dorothy and Herbert Vogel Collection

June 19, 2010 – August 29, 2010

Dorothy and Herbert Vogel assembled one of the world's most significant collections of minimal and conceptual art. Then they gave it away.

The Vogels partnered with the National Gallery of Art to distribute 2,500 works of art around the country, with 50 going to each of the 50 states. The Delaware Art Museum is proud to be the chosen institution to receive this gift in the State of Delaware. Our Vogel collection features art by Will Barnett, Lynda Benglis, Robert Mangold, Edda Renouf, Pat Steir, and Richard Tuttle, to name a few.

What's even more remarkable than the Vogels' generosity is their unique story. Dorothy Vogel is a retired librarian, and Herbert Vogel is a retired postal clerk. Shortly after they married, they decided to live only on Dorothy's salary, and to devote Herb's entire salary to purchasing art. In a tiny Manhattan apartment, they assembled their cutting-edge collection, placing art above their personal comfort.

By focusing on artists who were just starting out, the Vogels helped many careers blossom and forged life-long friendships. As a result, several of the works in their collection were given by the artists as gifts, adding a priceless personal touch.

Now, the Vogels' gift to the Delaware Art Museum has strengthened our holdings in contemporary American art. Visitors can expect a compelling mix that challenges the traditional expectations of symbols, narration, and representation in fine art. You can also see Pennsylvania's Vogel collection at PAFA beginning June 26 and learn more about the Vogels at www.vogel5050.org.



The Dorothy and Herbert Vogel Collection: Fifty Works for Fifty States is a joint initiative of the Trustees of the Dorothy and Herbert Vogel Collection and the National Gallery of Art, with the generous support of the National Endowment for the Arts and the Institute of Museum and Library Services. In Delaware, additional support is provided by the Emily du Pont Memorial Exhibition Fund and a group of the Delaware Art Museum's individual donors and Members.

Get Involved



EXHIBITION-RELATED PROGRAMS

Fact & Fantasy: The Making of Dinotopia (Artist Lecture)

Saturday, May 15, 1:00 p.m.

During this lively talk, artist James Gurney will explain how he created Dinotopia from its origins in 1988 to his most recent book, *Dinotopia: Journey to Chandara*. The lecture will conclude with a book signing at 2:30 p.m. ♦ Free with paid admission/No admission fee for Members.

Less is More: Understanding the Need for Simplicity in Art

Wednesdays, June 2, 9 & 16
10:30 a.m. – 11:30 a.m.

Executive Director Danielle Rice will discuss artistic traditions that favor simplicity and understatement in favor of detail and decoration. Participants will explore the thinking behind these traditions and consider how they relate to the conceptual art of the 20th century. ♦ **June 2:** Economy of Means in Asian and European Art. ♦ **June 9:** American Simplicity in Painting and Decorative Arts. ♦ **June 16:** Conceptual and Minimal Art in Context. ♦ Entire course: \$24 Members/\$30 Non-Members/Director's Circle Members free. ♦ Individual lectures: \$8 Members/\$10 Non-Members. ♦ To register, visit www.delart.org or contact Courtney Waring at 302.351.8509.

Fifty Works for the First State Members Preview

Friday, June 18
5:00 p.m. –
7:00 p.m.

Celebrate the Vogels' gift and their unique story at the Members Preview of *Fifty Works for the First State: The*



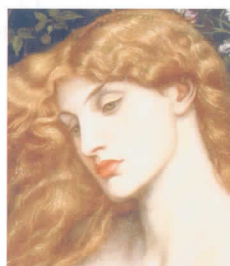
Dorothy and Herbert Vogel Collection. Mingle with some of the artists featured in the exhibition and take a tour with Assistant Curator Margaret Winslow. Includes hors d'oeuvres and a cash bar. ♦ Members \$20 if RSVP by June 11/\$25 if RSVP after. Non-Members \$35. ♦ Two free tickets for Members at Friend level and above. ♦ To register, call Heather Anderson at 302.351.8520 or visit www.delart.org.

"Herb & Dorothy" Documentary and Artist Interviews

Saturday, June 19, 11:00 a.m. – 2:00 p.m.
Encore screening of film: Sunday, June 20, 1:00 p.m.

First, there will be a screening of the documentary *Herb & Dorothy* (87 minutes), which tells the story of how the Vogels amassed their amazing collection of minimal art. Then, artists Charlie Clough and Richard Tuttle, whose works appear in the Vogel exhibition, will be interviewed in the DuPont Auditorium. Finally, the audience will be invited to participate in a Q&A session. ♦ Free with paid admission/No admission fee for Members. ♦ Sunday film is free.

ADDITIONAL PROGRAMS



A Mother's Day Treat—Love, Lies & Oil Paint Tour and Afternoon Tea

Sunday, May 9, Tours at
2:00 p.m., 2:30 p.m. &
3:00 p.m.

Treat your mother to our new "Love, Lies & Oil Paint" tour, which highlights the fascinating tales of romance and deception that lie in the artwork of our collection. Afterward, enjoy an exquisite afternoon tea in the Museum's East Court. ♦ When registering, choose your tour time: 2:00 p.m., 2:30 p.m., or 3:00 p.m. Tour will be one hour, followed by a seated tea. ♦ \$29 Members/\$35 Non-Members. ♦ For more information or to register, visit www.delart.org or contact Heather Anderson at 302.351.8520 or handerson@delart.org.

Traditional Chinese Folk Art and Craft Demonstrations

Sunday, May 16, 1:00 p.m. – 3:30 p.m.

This family-friendly program introduces Chinese Folk Art and Crafts through demonstrations conducted by seven visiting artists from Taiwan. Demonstrations include blown sugar sculptures, gourd carving, and hand puppets. Jointly presented by Delaware Art Museum, Chinese School of Delaware, and the Chinese American Community Center.

Taiwan Film Festival

Sundays, May 16, 23 & 30, 12:00 p.m. – 4:00 p.m.

The Delaware Art Museum is pleased to be one of the venues for the second year of the Taiwan Film Festival, presented by Hanlin Chinese Culture Association and Taipei Economic and Cultural Representative Office (USA). ♦ **May 16:** *Cape No. 7*. ♦ **May 23:** *Oyster Girl and Grandpa's Vacation*. ♦ **May 30:** *Dragon Inn* and *The Shoe Fairy*. ♦ For more information on the Taiwan Film Festival, visit www.hanlincca.org. ♦ Free.

Annual Members Meeting & Reception

Wednesday, May 12, 5:30 p.m. – 7:30 p.m.

All Members of the Delaware Art Museum are invited to the Museum's Annual Meeting. Join Executive Director Danielle Rice for a presentation about what the Museum has recently accomplished and hear about the exciting exhibitions in store for the summer and fall. Following the meeting, please join us for a wine and reception. ♦ To RSVP, call Margaret Patton at 302.351.8526 or mpatton@delart.org by Friday, April 30. ♦ Members only

International Museum Day

Wednesday, May 19

Every year, museums from around the world offer free admission for one day on or around May 18 to celebrate International Museum Day. Bring your friends to the Delaware Art Museum for free on Wednesday, May 19. ♦ Free.

Labyrinth Volunteer Day

Saturday, May 22, 10:00 a.m. – 1:00 p.m.
Rain Date: Saturday, June 5

Put on some clothes that can get dirty and come join us for a labyrinth face-lift! We will provide water, answers to labyrinth questions, and good cheer. For more information, contact Carol Maurer via email (labyrinth@delart.org) or phone at 610.574.1900.



Labyrinth Walks

First Fridays through October, 5:30 p.m. – 7:30 p.m.

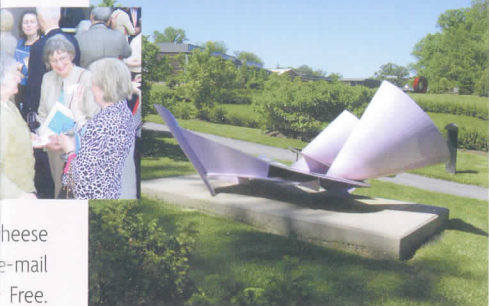
Come to the Museum's Copeland Sculpture Garden during Art on the Town for an evening of relaxation and education. Our labyrinth volunteers are available to provide guests with a historical overview of labyrinths and an introduction to walking them. Free, but donations will be accepted to help maintain the Museum's labyrinth.

Art on the Town

First Fridays, 4:00 p.m. – 8:00 p.m.

The Delaware Art Museum joins other cultural institutions in Wilmington to offer extended hours and free admission during the first Friday of the month. Features a cash bar. ♦ **May 7:** Dinotopia Gallery Chat at 6:00 p.m. Alfie Moss/Dexter Koonce Project from 6:00 p.m. to 7:30 p.m. ♦ **June 4:** Family Fun Summer Series, 4:00 p.m. – 8:00 p.m. Crosskeys, featuring Harvey Price on vibraphone and Jeff Knottner on piano, 5:30 p.m. – 6:30 p.m. ♦ Free.

tion



cheese
e-mail
Free.

REELTalk: A Movie Club

Thursdays, June 24, July 22 & August 26
11:00 a.m. – 12:30 p.m.

Join us for screenings of the Art City documentaries, which present an intimate glimpse into the modern art world, including interviews with artists from the Vogel collection and the Vogels themselves. Following each film, there will be group discussions led by Dr. Susan Isaacs, Assistant Professor of Art History, Towson University. ♦ **June 24:** *Art City 1: Making It in Manhattan* (1996). ♦ **July 22:** *Art City 2: Simplicity* (2002). ♦ **August 26:** *Art City 3: A Ruling Passion* (2002). ♦ Free with paid admission/No admission fee for Members.

Brandywine Treasure Trail Passport

May 31 – September 6: Back again!

Embark on a treasure trail of the Brandywine Valley's top attractions this summer for one affordable price. Includes one-time general admission to: Brandywine River Museum, Delaware Art Museum, Delaware Center for the Contemporary Arts, Delaware History Museum and Read House, Delaware Museum of Natural History, Hagley Museum and Library, Longwood Gardens, Mt. Cuba Center, Rockwood Museum, and Winterthur Museum & Country Estate. ♦ \$35 Individual/\$75 Family. ♦ Tickets can be purchased at all 10 locations, the Hilton Wilmington/Christiana, and local visitor centers. ♦ For more information, please visit www.bandywinetreasures.org.

Docent Program

New class beginning in September 2010

Expand your horizons while you teach adult and school groups in the Delaware Art Museum as a Docent Tour Guide. Experience in art, art history, public speaking, or education is very helpful but not required. Docent requirements include regular attendance at weekly meetings and being available at tour times. ♦ For more information, contact Courtney Waring, Director of Education, at 302.351.8509 or via e-mail cwaring@delart.org.



FAMILY PROGRAMS

Glory of Stories

Fridays, 10:30 a.m. – 11:30 a.m.

A story-reading leads to a viewing of relevant works of art, followed by an art project. ♦ Ages 3 – 6. ♦ \$3 per child.

- May 7 *Still Life Stew* by Victoria Raymond
- May 14 *Pirate Girl* by Cornelia Funke
- May 21 *A Day with No Crayons* by Elizabeth Rusch
- May 28 *Not in a Box* by Antoinette Portis
- June 4 *Little Blue and Little Yellow* by Leo Lionni
- June 11 *A Piece of Chalk* by Jennifer A. Ericsson
- June 18 *Babar's Museum of Art* by Laurent De Brunhoff
- June 25 *Riley and Rose* by Susanna Gretz

Make & Take Saturday featuring Dinotopia Family Tour

Saturday, May 1, 12:30 p.m. – 2:30 p.m. | Tour at 2:00 p.m.

Discover a world where humans and dinosaurs coexist at the Museum's exhibition *Dinotopia*. The art activity of the month is Dinosaur Game Boards. Afterward, enjoy a Dinotopia Tour at 2:00 p.m. ♦ All ages. ♦ Free with Museum admission/No admission fee for Members.

Dinotopia Family Day Returns

Saturday, May 15 10:00 a.m. – 3:00 p.m.

Because of the snowstorm during the first Dinotopia Family Day in February, James Gurney is returning for the final weekend of *Dinotopia: The Fantastical Art of James Gurney!* Families will have an opportunity to explore Gurney's extraordinary world on family-friendly tours of the exhibition and create hands-on art activities inspired by his popular Dinotopia series. Gurney will give a public lecture (1:00 p.m.) followed by a book signing (2:30 p.m.) where visitors will have a chance to meet the artist. ♦ Free with paid admission/No admission fee for Members.

Dinotopia Journey Guide for Families

Through May 16

Pick up a Dinotopia Journey Guide at the Museum's front desk to help the family navigate and discover *Dinotopia*. ♦ Free.

Family Fun Summer Series

Fridays, June 4, July 9 & August 6, 4:00 p.m. – 8:00 p.m.

Enjoy special performances while your family picnics on the Museum's Terrace or in the Copeland Sculpture Garden. You can bring your food or visit the DelART Café, where food, drinks, and alcohol beverages will be for sale. Towards the end of the evening, families will wind down inside the Museum with special story-readings for both children and adults. ♦ **June 4:** Crosskeys, featuring Harvey Price on vibraphone and Jeff Knottner on piano, 5:30 p.m. – 6:30 p.m. Story-readings, 7:00 p.m. – 7:30 p.m. ♦ Free.

STUDIO PROGRAMS

Annual Student Exhibition

April 30 – May 31

This year's Annual Student Exhibition in the Museum's Bank of American Education Wing honors and celebrates participants from the 2009 Studio Art Program classes.

Dinotopia Workshop with James Gurney: Creature Design

Sunday, May 16, 11:00 a.m. – 4:00 p.m.

Explore a new world of art with much-admired author and illustrator James Gurney, whose work is featured in the exhibition *Dinotopia*. In this one-day, hands-on workshop, students will explore commonly found organic or mechanical forms, rendering them from observation and re-working into a realistic creature design. ♦ Ages 12 – adult. ♦ \$55 Members/\$65 Non-Members.



Summer Art Camp 2010

All camps are two-week sessions. Spots are filling up quickly so register today! ♦ **Session 1 (June 21 – July 2):** Animal Adventures. ♦ **Session 2 (July 5 – July 16):** Faces and Places. ♦ **Session 3 (July 19 – 30):** Illustration Nation. ♦ **Session 4 (August 2 – 13):** Museum Expedition. ♦ \$550 (\$500 for Members at the Family PLUS level and above). ♦ To register, visit www.delart.org.

Summer 2010 Studio Art Program

Classes will begin June 21. Summer classes include ceramics, painting, drawing, metalsmithing, and various workshops. Visit www.delart.org for more information.

MUSEUM STORE

The Dorothy and Herbert Vogel Collection: Fifty Works for Fifty States

\$20 (Members save 10%)

This catalog provides a state-by-state overview of the Vogel collection, which has been distributed to institutions around the country, including the Delaware Art Museum, the Albright-Knox Art Gallery, the Miami Art Museum, and the Pennsylvania Academy of the Fine Arts. It includes excellent photographs, a word from Dorothy Vogel, and an essay by Ruth Fine of the National Gallery of Art.



Your Museum



GENERAL INFORMATION

Mission Statement

The Delaware Art Museum connects people to art, offering an inclusive and essential community resource that through its collections, exhibitions, and programs generates creative energy that sustains, enriches, empowers, and inspires.

Location & Hours

2301 Kentmere Parkway, Wilmington, DE 19806

Wednesday – Saturday: 10:00 a.m. – 4:00 p.m.

Sunday: noon – 4:00 p.m.

Monday – Tuesday: closed

Admission Prices

Museum Members: Free

Family Admission (up to 2 adults and 4 children): \$25

Adults: \$12

Seniors (60+): \$10

Students (w/valid ID): \$6

Youth (ages 7 – 18): \$6

Children 6 and under: Free

Museum admission is waived every Sunday thanks to support from AstraZeneca.

Contact Us

Phone: 302.571.9590

Fax: 302.428.1049

Web: www.delart.org

E-mail: info@delart.org

Comments: feedback@delart.org

Visit us on Facebook, Twitter, and Flickr!

Helen Farr Sloan Library & Archives

Wednesday – Friday, 10:00 a.m. – 4:00 p.m., by appointment

DelART Café

Wednesday – Saturday, 11:00 a.m. – 3:00 p.m.

Sunday, noon – 3:00 p.m.

Public Tours

Docents lead tours of the Museum's permanent collection and temporary exhibitions every weekend.

Saturdays and Sundays

Highlights Tour at 1:00 p.m.

Exhibition Tour at 2:00 p.m.

Sponsors

Programs at the Delaware Art Museum are made possible, in part, by grants from the Delaware Division of the Arts, a state agency dedicated to nurturing and supporting the arts in Delaware, in partnership with the National Endowment for the Arts.



J.P.Morgan

AstraZeneca

Bank of America

INSTITUTE of Museum and Library SERVICES

WILMINGTON TRUST

Front cover: *Untitled #4* (detail), 1983. Martin Brian Johnson (born 1951). Acrylic, enamel, graphite and ink on paper sheet, 30 x 40 inches. Delaware Art Museum, Dorothy and Herbert Vogel Collection, 2008. © Martin Johnson, 2010. **See It page:** (clockwise, from top-right) *Dorothy and Herbert Vogel at The Clocktower*, 1975. Photograph by Nathaniel Tileston. | *Wit*, 2001. Lucio Pozzi (born 1935). Oil on canvas, 7 7/8 inches. Delaware Art Museum, Dorothy and Herbert Vogel Collection, 2008. © Lucio Pozzi, 2010. | *Marriage La Sirene et Agoue*, c. 2009. Evelyn Alcide. Sequins on fabric. Collection of Nancy Josephson. | *Morning of Life*, 1861. Samuel Palmer (1805-1881). Etching, 5 3/8 x 8 1/8 inches. Gift of Dr. Charles Lee Reese, 1940. **Mark Your Calendar page:** Photograph by Museum Staff. **Get Involved pages:** (clockwise, from top left) *Habitat Partners*, from *Dinotopia: A Land Apart from Time*. James Gurney (born 1958). Oil on board, 18 x 26 inches. Collection of the artist. © 1992 James Gurney. All rights reserved. | *Lady Lilith*, 1866-1868. Dante Gabriel Rossetti (1828-1882). Oil on canvas, 38 x 33 1/2 inches. Samuel and Mary R. Bancroft Memorial, 1935. | Photograph by Museum Staff. | Photograph by Stu Siegell. | *Air Autumn #1*, 1990. Edda Renouf (born 1943). Graphite and pastel on Rives paper, 11 7/8 x 11 7/8 inches. Delaware Art Museum, Dorothy and Herbert Vogel Collection, 2008. © Edda Renouf, 2010. **Your Museum page:** (left to right) Photograph by Leslie W. Kipp. | Photograph by Museum Staff.

Announcements



We are proud to announce Susan M. Zellner, Director of Development at the Delaware Art Museum, has been chosen to participate in the Rotary Foundation's Group Study Exchange program in May. Sponsored by the Rotary Club of Wilmington, Susan is traveling to Italy, where she will interact and share ideas with European fundraising professionals. Not only will she develop new relationships, she will be immersed in Italy's culture and institutions.

Susan is particularly interested in visiting Howard Pyle's grave and the areas where he studied in the last year of his life. Even though Pyle was regarded as a master illustrator, he traveled to Italy to further develop his skills, only to pass away there unexpectedly in 1911.

BOARD OF TRUSTEES

Phyllis Aerenson*
 Carol A. Ammon
 David W. Baldt
 Maria M. Buccini*
 Carolyn S. Burger*
 Uma Chowdhry
 Gerret van S. Copeland*
 Doneene Keemer Damon
 Lisa R. Davis
 Lynn B. DelPorte
 Donald C. DeWees, Sr.
 Denni M. Ferrara
 Elva B. Ferrari*
 Stuart M. Grant*
 Linda Brinton Harra*
 Richard J. Immesberger
 Lee M. Kallos

Daniel M. Kristol
 Wanda M. Lopez
 Paula J. Malone
 Donald J. Puglisi*
 Carol S. Rothschild*
 Joan L. Sharp
 Joanne K. Sundheim
 Josephine Vassallo
 Brock J. Vinton*
 Edgar S. Woolard, Jr.**
 Peggy H. Woolard**
 Lawrence I. Zutz

*Executive Committee

**Honorary

Ex-Officio



Mixed Sources

Product group from well-managed forests and other controlled sources
www.fsc.org Cert no. SW-COC-002218
 © 1996 Forest Stewardship Council

Printing Support
 Provided By:



McClafferty Printing Co.

Mark Your Calendar

MAY

1 - Saturday

Make & Take Saturday

12:30 p.m. – 2:30 p.m.

Highlights Tour 1:00 p.m.

Exhibition Tour 2:00 p.m.

Dinotopia Family Tour 2:00 p.m.

2 - Sunday

Highlights Tour 1:00 p.m.

Exhibition Tour 2:00 p.m.

7 - Friday

Glory of Stories

10:30 a.m. – 11:30 a.m.

Art on the Town

4:00 p.m. – 8:00 p.m.

8 - Saturday

Haiti: A Tribute in Art Opens

Highlights Tour 1:00 p.m.

Exhibition Tour 2:00 p.m.

9 - Sunday

Mother's Day Event

2:00 p.m., 2:30 p.m. & 3:00 p.m.

Highlights Tour 1:00 p.m.

Exhibition Tour 2:00 p.m.

12 - Wednesday

Annual Members Meeting &

Reception 5:30 p.m. – 7:30 p.m.

14 - Friday

Glory of Stories

10:30 a.m. – 11:30 a.m.

15 - Saturday

The Pastoral Vision Opens

Dinotopia Family Day

10:00 a.m. – 3:00 p.m.

Highlights Tour 1:00 p.m.

Exhibition Tour 2:00 p.m.

16 - Sunday

Dinotopia Closes

Taiwan Film Festival

12:00 p.m. – 4:00 p.m.

Dinotopia Workshop

11:00 a.m. – 4:00 p.m.

Highlights Tour 1:00 p.m.

Chinese Demo 1:00 p.m. – 3:30 p.m.

Exhibition Tour 2:00 p.m.

19 - Wednesday

International Museum Day

21 - Friday

Glory of Stories

10:30 a.m. – 11:30 a.m.

22 - Saturday

Labyrinth Volunteer Day

10:00 a.m. – 1:00 p.m.

Highlights Tour 1:00 p.m.

Exhibition Tour 2:00 p.m.

23 - Sunday

Taiwan Film Festival

12:00 p.m. – 4:00 p.m.

Highlights Tour 1:00 p.m.

Exhibition Tour 2:00 p.m.

28 - Friday

Glory of Stories

10:30 a.m. – 11:30 a.m.

29 - Saturday

Highlights Tour 1:00 p.m.

Exhibition Tour 2:00 p.m.

30 - Sunday

Taiwan Film Festival

12:00 p.m. – 4:00 p.m.

Highlights Tour 1:00 p.m.

Exhibition Tour 2:00 p.m.

JUNE

2 - Wednesday

Less is More (Lecture)

10:30 a.m. – 11:30 a.m.

4 - Friday

Glory of Stories

10:30 a.m. – 11:30 a.m.

Art on the Town

4:00 p.m. – 8:00 p.m.

5 - Saturday

Highlights Tour 1:00 p.m.

Exhibition Tour 2:00 p.m.

6 - Sunday

Highlights Tour 1:00 p.m.

Exhibition Tour 2:00 p.m.

9 - Wednesday

Less is More (Lecture)

10:30 a.m. – 11:30 a.m.

11 - Friday

Glory of Stories

10:30 a.m. – 11:30 a.m.

12 - Saturday

Highlights Tour 1:00 p.m.

Exhibition Tour 2:00 p.m.

13 - Sunday

Highlights Tour 1:00 p.m.

Exhibition Tour 2:00 p.m.

16 - Wednesday

Less is More (Lecture)

10:30 a.m. – 11:30 a.m.

18 - Friday

Glory of Stories

10:30 a.m. – 11:30 a.m.

Fifty Works for the First State

Members Preview

5:00 p.m. – 7:00 p.m.

19 - Saturday

Fifty Works for the First State

Opens

Herb & Dorothy

Documentary and Artist

Interviews 11:00 a.m. – 2:00 p.m.

Highlights Tour 1:00 p.m.

Exhibition Tour 2:00 p.m.

20 - Sunday

Herb & Dorothy Documentary

11:00 a.m. – 2:00 p.m.

Highlights Tour 1:00 p.m.

Exhibition Tour 2:00 p.m.

24 - Thursday

REEL Talk 11:00 a.m. – 12:30 p.m.

25 - Friday

Glory of Stories

10:30 a.m. – 11:30 a.m.

26 - Saturday

Highlights Tour 1:00 p.m.

Exhibition Tour 2:00 p.m.

27 - Sunday

Highlights Tour 1:00 p.m.

Exhibition Tour 2:00 p.m.

For detailed information, see the descriptions throughout the newsletter or visit us online at www.delart.org.

Meet the Members

Louise Schoonover Smith and John R. Schoonover

Louise "Fibbie" Schoonover Smith and her brother John R. Schoonover are the grandchildren of Frank E. Schoonover, popular Wilmington illustrator and Howard Pyle student. Longtime Members of the Museum, they collaborated with us in 2008 on the very popular Schoonover exhibition. In 2009, they gave the Frank E. Schoonover Catalogue Raisonné Collection to the Museum's Helen Farr Sloan Library & Archives. This gift augmented the Library's sizable Schoonover holdings, making it the main repository for the artist's archival materials. Louise and John are pictured above with Executive Director Danielle Rice and Librarian Rachael DiEleuterio.

Why did you select the Delaware Art Museum for this collection?

Fibbie: We did so much of our research for the *Frank E. Schoonover Catalogue Raisonné* at the Museum's

library. [A catalogue raisonné is a complete listing of an artist's work.] Our grandfather's daybooks are part of the Library's collection. He would come to the Museum every week, so when I visited him on Sundays, he would almost always take me here. Our stepmother also donated archival materials in 1977.

John: Frank Schoonover was part of the Museum from the very beginning—he was one of the original founders in 1912, following Howard Pyle's death. So it makes sense to see his archives here. And he had several great exhibitions here, including a major retrospective in 1962.

What's in the collection?

Fibbie: There are research files from when we were writing the catalogue raisonné, original archival materials, tear sheets, periodicals, exhibition and sales catalogs, and administrative files—invaluable resources for anyone studying Frank Schoonover or American illustration.

John: I'm also donating a separate gift of almost

400 periodicals—the original publications of many of Frank Schoonover's illustrations that give a broad overview of his contributions to American illustration.

Do you have any suggestions for other researchers interested in Frank E. Schoonover?

Fibbie: The Frank E. Schoonover Fund, Inc., is going to launch an online version of the catalogue raisonné in May. This way, we'll always be able to add new information.

John: And visitors can also come to my grandfather's studio in Wilmington, where he originally painted. There they'll find a lot of his ephemera.





DELAWARE ART MUSEUM

2301 Kentmere Parkway • Wilmington, DE 19806

302.571.9590 • www.delart.org

Non Profit Org.

U.S. Postage

PAID

Wilmington, DE

Permit No. 46